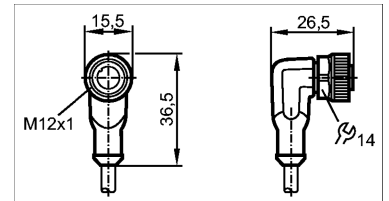
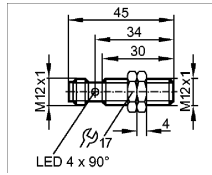
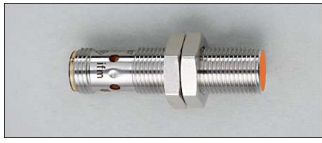


# INDUCTIEVE SENSOR IFS204-12CF CONNECTOR EVC004-M12



## PRODUCT CHARACTERISTICS

Inductive sensor metal thread M12 x 1  
Quick disconnect  
Increased sensing range  
Gold-plated contacts  
Sensing range 4 mm; Flush mountable

## ELECTRICAL DATA

Electrical design : DC PNP  
Operating voltage : 10V...30V DC  
Current consumption : 10mA; (24 V)  
Protection class : II  
Reverse polarity protection : yes

## OUTPUTS

Output function : normally open  
Voltage drop : < 2.5V  
Current rating : 100mA  
Short-circuit protection : Yes (non-latching)  
Overload protection : Yes  
Switching frequency : 700 Hz

## MONITORING RANGE

Sensing range : 4mm  
Real sensing range (Sr) :  $4 \pm 10\%$   
Operating distance : 0...3,25 mm

## ACCURACY / DEVIATIONS

Correction factors : mild steel = 1 / stainless steel approx. 0,7 / brass approx. 0,5 / aluminium approx. 0,4 / copper approx. 0,3  
Hysteresis : 3...15% of Sr  
Switch-point drift : -10...10% of Sr

## ENVIRONMENT

Ambient temperature : -25...70°C  
Protection : IP 67

## MECHANICAL DATA

Mounting : flush mountable  
Housing materials : brass white bronze coated; PBT;  
PEI; lock nuts: brass  
Weight : 0,024kg

## WIRING



## PRODUCT CHARACTERISTICS

Connector for sensors with M12 connector  
Free from silicone  
Free from halogen  
Gold-plated contacts

## ELECTRICAL DATA

Electrical design : AC/DC  
Operating voltage [V] : 250 AC / 300 DC  
Current rating [A] : 4  
Protection class : II

## ENVIRONMENT

Ambient temperature [°C] : -25...90, cULus: max. 75 °C  
Ambient temperature (moving) [°C] : -25...90, cULus: max. 75 °C  
Protection : IP 65 / IP 67 / IP 68 / IP 69K

## MECHANICAL DATA

Design : Angled  
Material body : housing: TPU orange; sealing: Viton  
Material nut : Brass; nickel-plated  
Tightening torque for knurled nut : 0.6...1.5 N.m  
Weight : 0.081kg

## DRAG CHAIN SUITABILITY

Bending radius for flexible applications : min. 10 x cable diameter  
Travel speed : max. 3.3 m/s for a horizontal travel length of 5 m and max. acceleration of 5 m/s<sup>2</sup>  
Bending cycles : > 5 million  
Torsional strain :  $\pm 180$  °/m

## ELECTRICAL CONNECTION

Connection : PUR cable / 2 m; 4 x 0.34 mm<sup>2</sup> (42 x Ø 0.1 mm);  
Ø 4.9 mm; halogen-free  
Sheath colour : black

## WIRING

Core colours  
BK : black  
BN : brown  
BU : blue  
WH : white

